



**WINFAN TECHNOLOGY CO., LTD.**

**TEXEL FRPP CHEMICAL FANS FRP PP**



**CES-D**  
Fan series

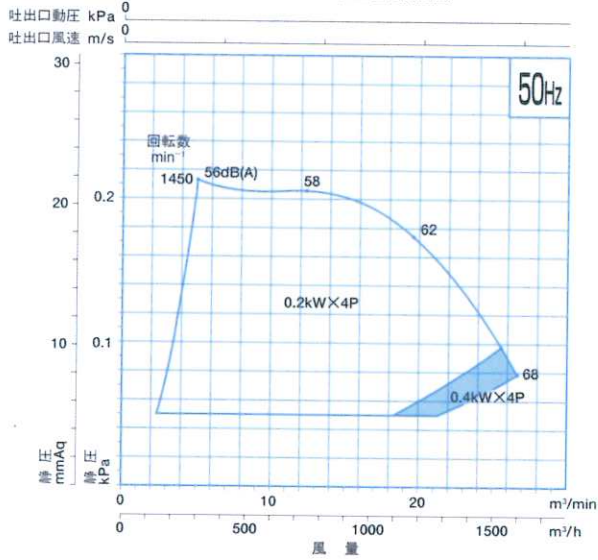
**WinFan**  
Technology

Low Vibration • Low noise

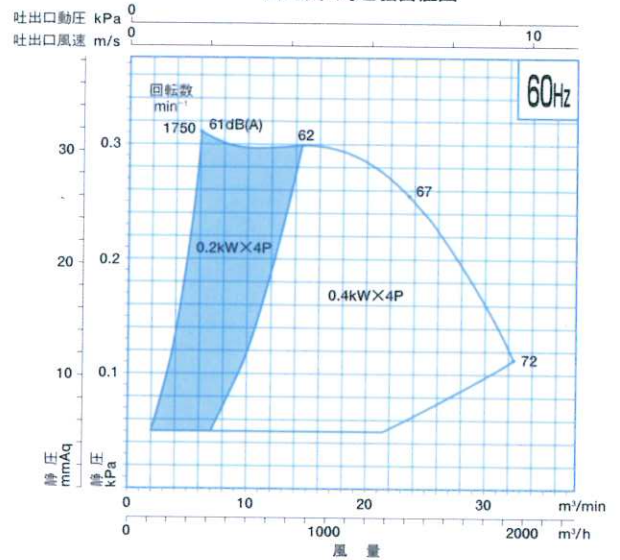
# 容量图 [CES-D形]

## CES 101D

容量图·周边騒音値图

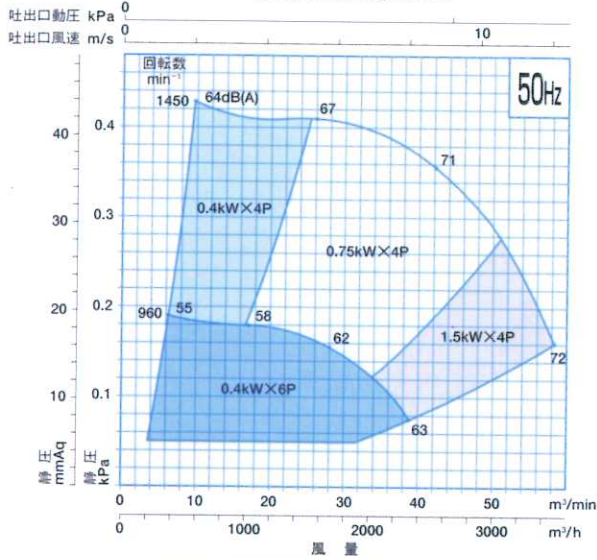


容量图·周边騒音値图

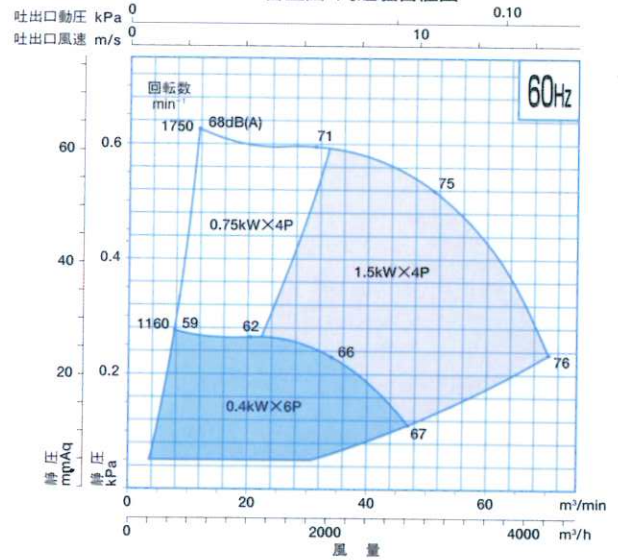


## CES 151D

容量图·周边騒音値图

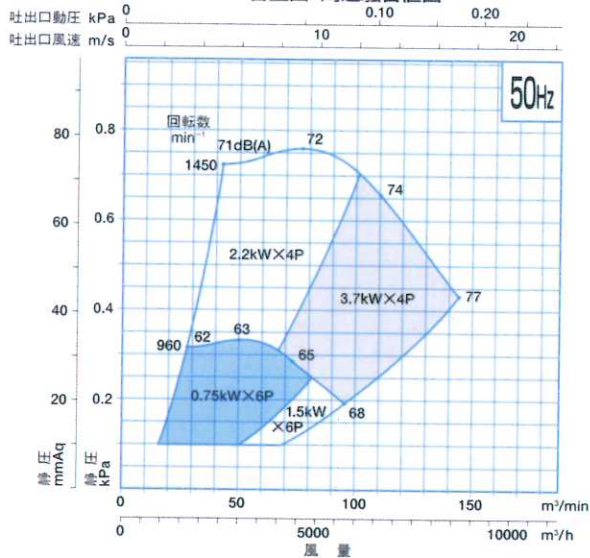


容量图·周边騒音値图

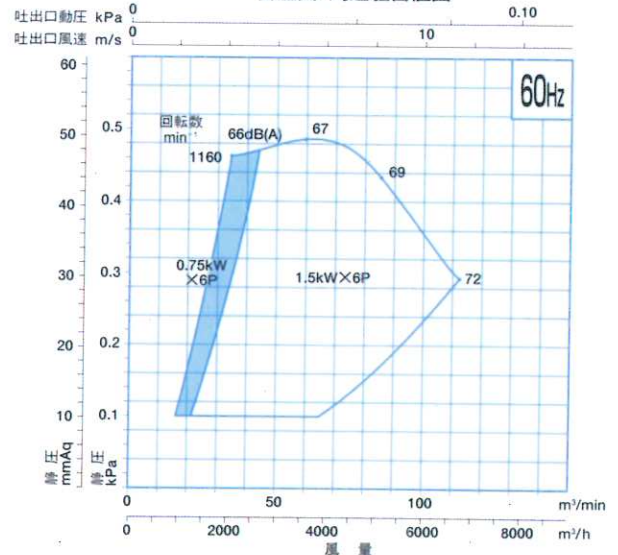


## CES 201D

容量图·周边騒音値图

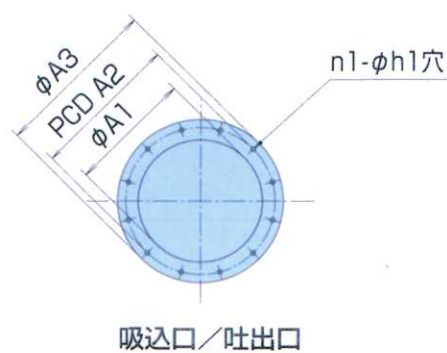
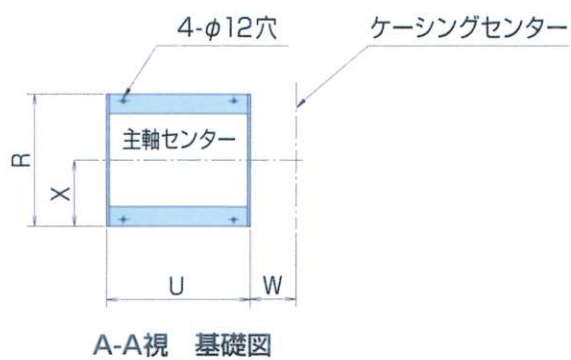
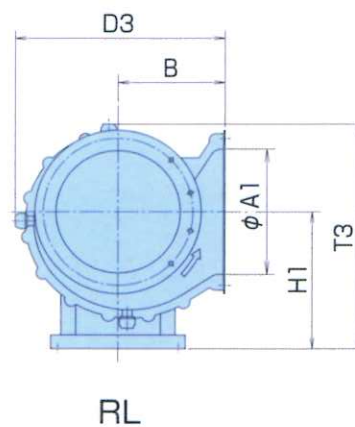
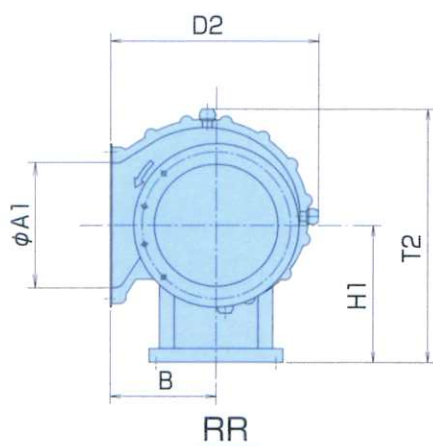
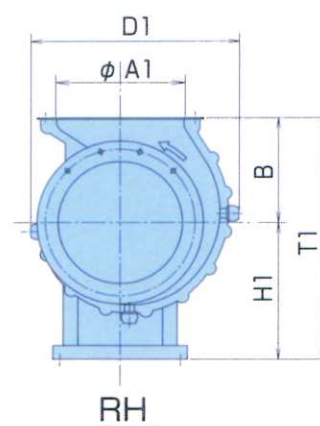
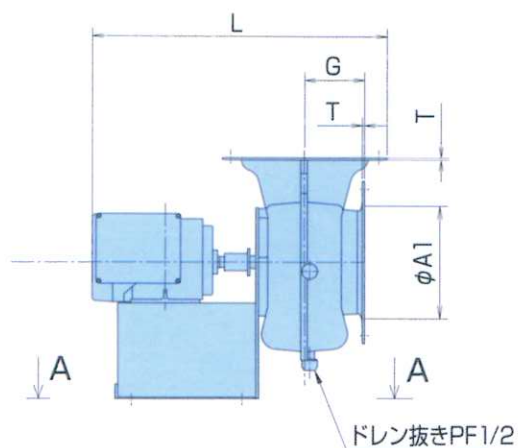


容量图·周边騒音値图



# 外形寸法図 [CES-D・V形]

## CES101D、V・151D、V・201D、V

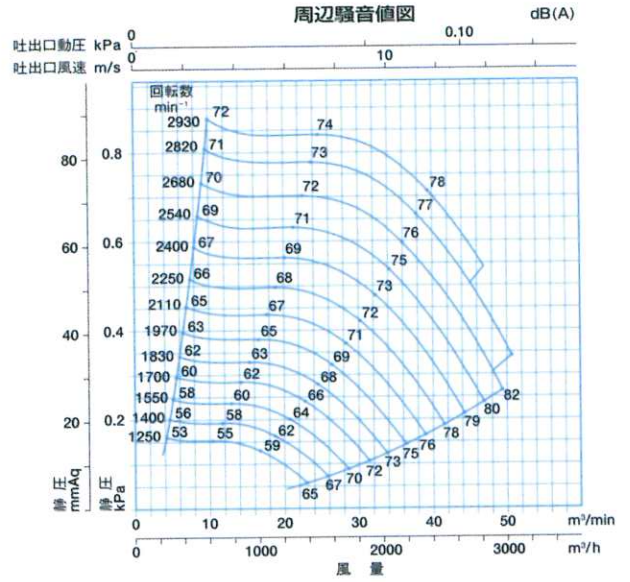
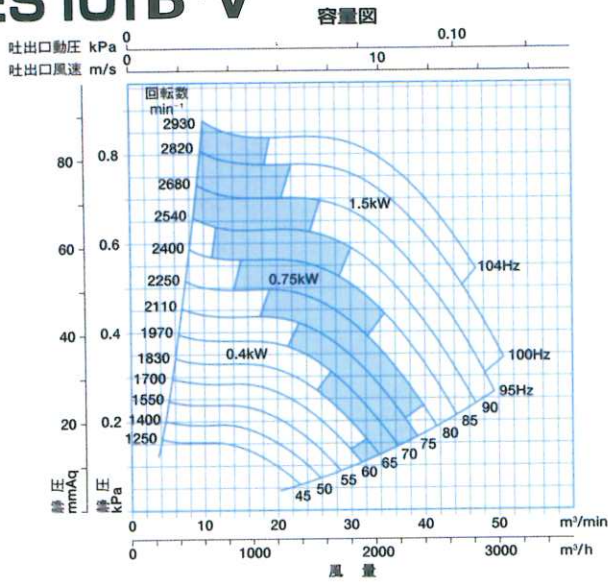


| 形式        | ケーシング |     |     |     |     |     |     |     | 吸込/吐出フランジ |     |       |     |    |    |     |
|-----------|-------|-----|-----|-----|-----|-----|-----|-----|-----------|-----|-------|-----|----|----|-----|
|           | L     | H1  | B   | D1  | D2  | T1  | T2  | T3  | G         | φA1 | PCDA2 | φA3 | n1 | h1 | T   |
| CES101D,V | 642   | 300 | 230 | 447 | 452 | 530 | 556 | 492 | 130       | 268 | 322   | 358 | 12 | 10 | 3   |
| CES151D,V | 750   | 380 | 300 | 560 | 578 | 680 | 700 | 620 | 160       | 320 | 382   | 421 | 16 | 12 | 3   |
| CES201D,V | 852   | 500 | 400 | 705 | 753 | 900 | 907 | 798 | 200       | 422 | 482   | 520 | 20 | 14 | 3.5 |

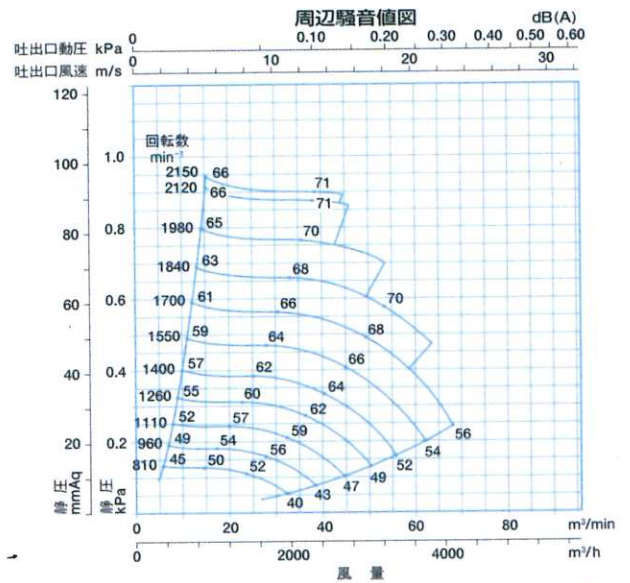
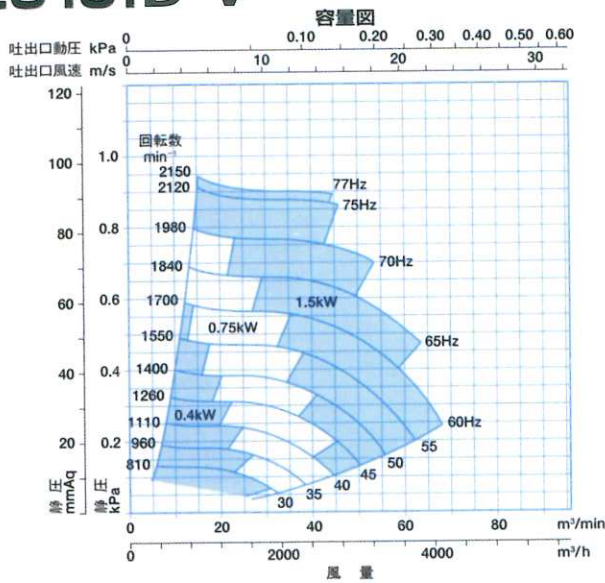
| 形式        | 基礎  |     |     |     | 本体質量 (Kg) |        |             |
|-----------|-----|-----|-----|-----|-----------|--------|-------------|
|           | R   | U   | W   | X   | 標準        | 防振架台付き | 防振スプリング架台付き |
| CES101D,V | 290 | 312 | 100 | 145 | 16        | 24     | 42          |
| CES151D,V | 290 | 346 | 128 | 145 | 19        | 28     | 46          |
| CES201D,V | 370 | 366 | 160 | 185 | 36        | 46     | 67          |

注) 本体質量は概算質量で、電動機質量は含みません。

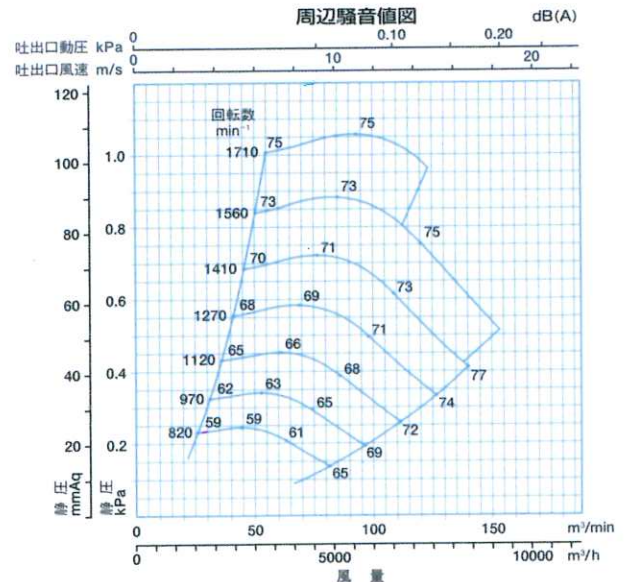
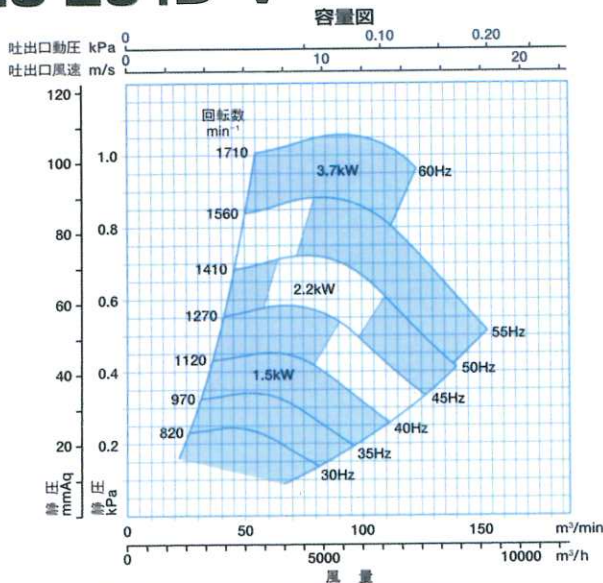
## CES 101B・V



## CES 151B・V

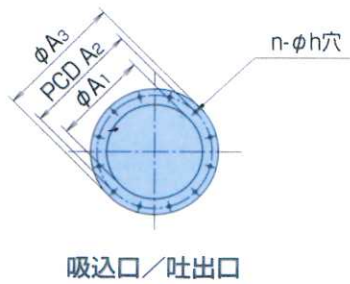
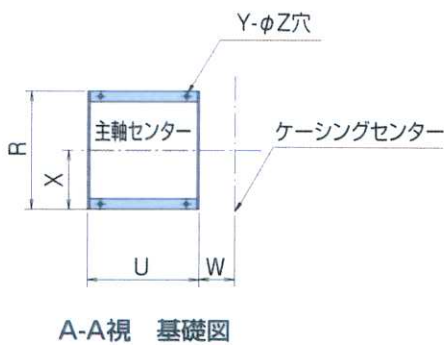
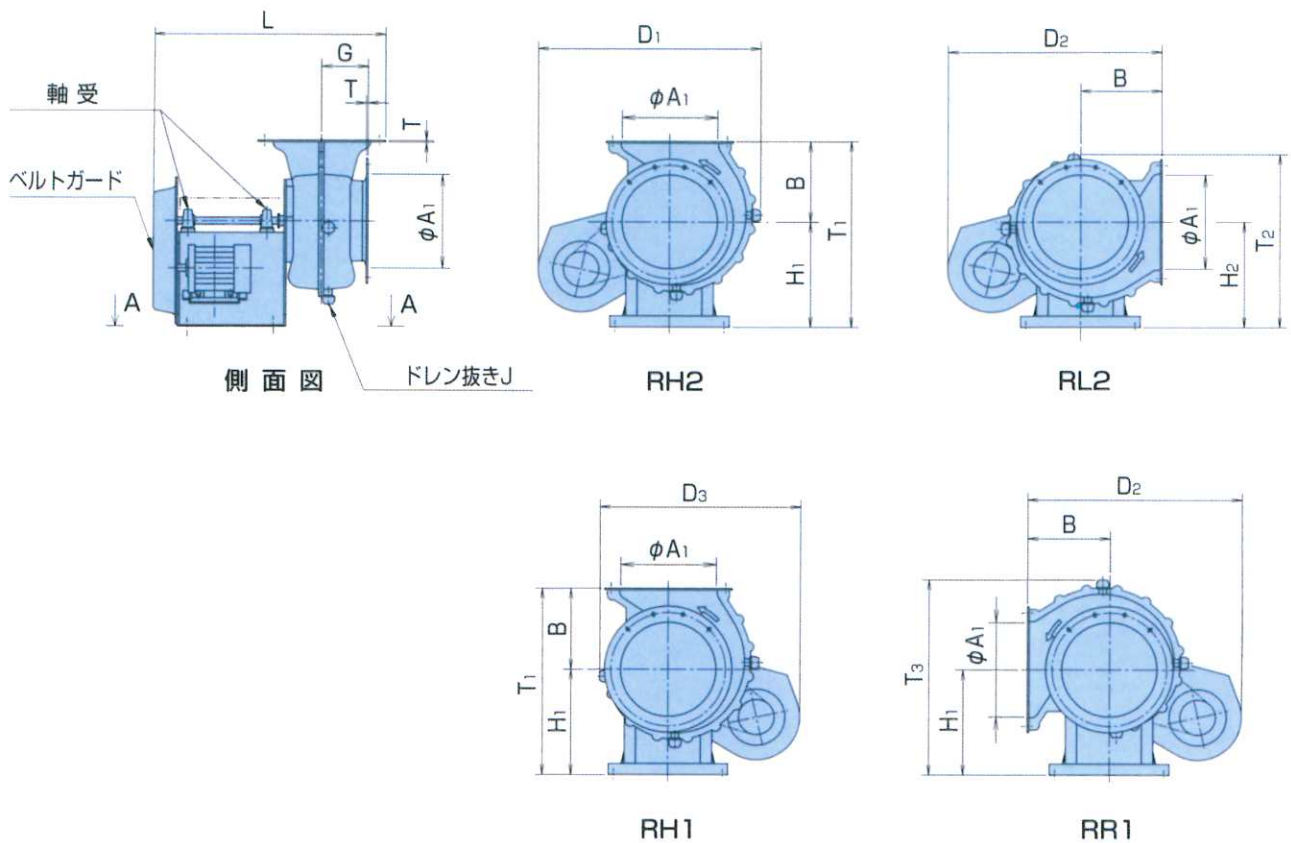


## CES 201B・V



# 外形寸法図 [CES・B形]

## CES 101B・151B・201B

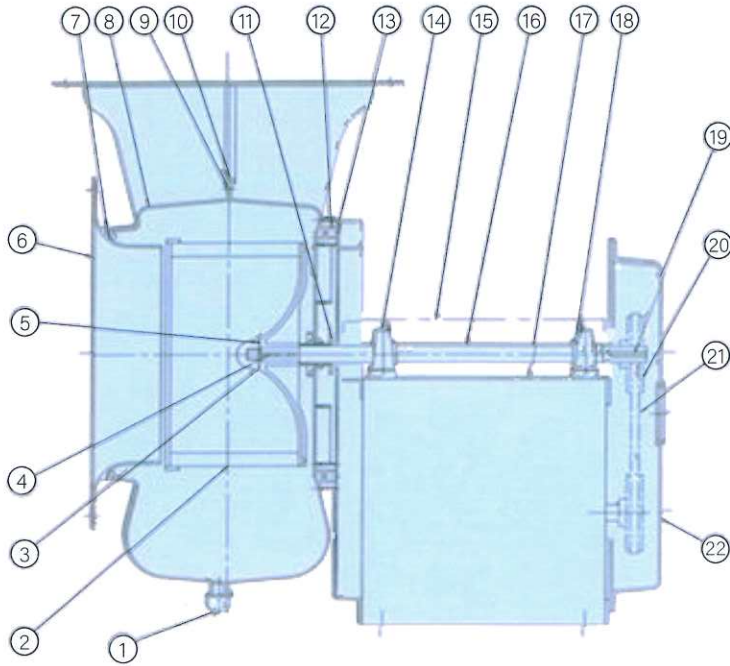


| 形式     | ケーシング |                |                |     |                |                |                |                |                |                |     | 吸込/吐出フランジ       |                    |                 |    |    |     |
|--------|-------|----------------|----------------|-----|----------------|----------------|----------------|----------------|----------------|----------------|-----|-----------------|--------------------|-----------------|----|----|-----|
|        | L     | H <sub>1</sub> | H <sub>2</sub> | B   | D <sub>1</sub> | D <sub>2</sub> | D <sub>3</sub> | T <sub>1</sub> | T <sub>2</sub> | T <sub>3</sub> | G   | φA <sub>1</sub> | PCD A <sub>2</sub> | φA <sub>3</sub> | n  | h  | T   |
| CES101 | 658   | 300            | 300            | 230 | 625            | 600            | 562            | 530            | 492            | 555            | 130 | 268             | 322                | 358             | 12 | 10 | 3   |
| CES151 | 812   | 320            | 380            | 300 | 755            | 735            | 675            | 620            | 620            | 640            | 160 | 320             | 382                | 421             | 16 | 12 | 3   |
| CES201 | 913   | 400            | 500            | 400 | 867            | 860            | 758            | 800            | 798            | 807            | 200 | 422             | 482                | 520             | 20 | 14 | 3.5 |

| 形式     | 基礎寸法   |     |     |     |     |   |    | 本体質量 (Kg) |        |             | 軸受     |
|--------|--------|-----|-----|-----|-----|---|----|-----------|--------|-------------|--------|
|        | ドレン抜き  | R   | U   | W   | X   | Y | Z  | 標準        | 防振架台付き | 防振スプリング架台付き |        |
| CES101 | PF1/2" | 336 | 312 | 100 | 168 | 4 | 12 | 18        | 28     | 37          | UCP204 |
| CES151 | PF1/2" | 430 | 406 | 128 | 215 | 4 | 12 | 25        | 37     | 48          | UCP205 |
| CES201 | PF1/2" | 580 | 406 | 160 | 290 | 4 | 12 | 42        | 58     | 67          | UCP205 |

注) 本体質量には電動機質量を含みません。

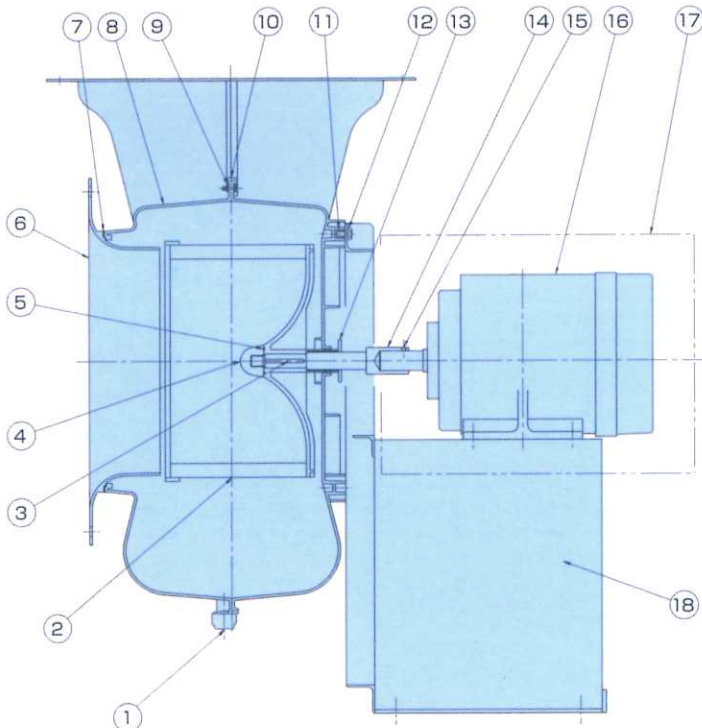
## CES101・151・201



■材質表

| No. | NAME OF PART     | MATERIALS | QTY  | REMARKS      |
|-----|------------------|-----------|------|--------------|
| 1   | Drain Plug       | PE        | 3    | PF1/2"       |
| 2   | Impeller         | FRPP      | 1    |              |
| 3   | Nut Cover        | PP        | 1    |              |
| 4   | Impeller Key     | S45C      | 1    |              |
| 5   | Nut Cover O-Ring | CR        | 1    |              |
| 6   | Suction Cone     | FRPP      | 1    |              |
| 7   | Gasket           | PE        | 1    |              |
| 8   | Casing           | FRPP      | 1    |              |
| 9   | Casing Bolt      | SUS304    | 1set |              |
| 10  | Casing Gasket    | PE        | 1    |              |
| 11  | Seal Ring        | PE        | 1    |              |
| 12  | Insert Nut       | Bs BM     | 1set |              |
| 13  | Casing Set Bolt  | SUS304    | 1set |              |
| 14  | Bearing Unit     | SUJ2      | 2    | Pillow Block |
| 15  | Shaft Guard      | FRP       | 1    |              |
| 16  | Shaft            | S45C      | 1    |              |
| 17  | Bracket          | SS400     | 1    |              |
| 18  | Grease Nipple    | Bs BM     | 2    |              |
| 19  | V-Pulley Key     | S45C      | 1    |              |
| 20  | V-Pulley         | FC200     | 2    |              |
| 21  | V-Belt           | Rubber    | 1set |              |
| 22  | Belt Guard       | FRP       | 1    |              |

## CES101D・151D・201D



■材質表

| No. | NAME OF PART     | MATERIALS | QTY  | REMARKS |
|-----|------------------|-----------|------|---------|
| 1   | Drain Plug       | PE        | 3    | PF1/2"  |
| 2   | Impeller         | FRPP      | 1    |         |
| 3   | Impeller Key     | S45C      | 1    |         |
| 4   | Nut Cover        | PP        | 1    |         |
| 5   | Nut Cover O-Ring | CR        | 1    |         |
| 6   | Suction Cone     | FRPP      | 1    |         |
| 7   | Gasket           | PE        | 1    |         |
| 8   | Casing           | FRPP      | 1    |         |
| 9   | Casing Bolt      | SUS304    | 1set |         |
| 10  | Casing Gasket    | PE        | 1    |         |
| 11  | Insert Nut       | Bs BM     | 1set |         |
| 12  | Casing Set Bolt  | SUS304    | 1set |         |
| 13  | Seal Ring        | PE        | 1    |         |
| 14  | Shaft Guard      | FRP       | 1    |         |
| 15  | Shaft            | S45C      | 1    |         |
| 16  | Shaft Set Screw  | SUS304    | 1set |         |
| 17  | Motor            | —         | 1    |         |
| 18  | Bracket          | SS400     | 1    |         |

シロッコファンの進化形。  
より優れたメンテナンス性、省力化を発揮する直動式送風機。

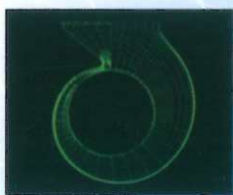
## CES-D形 CES-V形

独自の三次元曲面設計によるセンター吐出しを採用しました。  
ケーシング・羽根車ともFRPP射出成形品とし、リサイクル性にも配慮した直動式シロッコファンです。

### 特長

#### [Standardized central discharge]

Conventional models featured 6 rotational discharge directions, however, this fan's right rotation only central discharge cuts the number of rotational directions to 3 types. This significantly reduces the complexity of choosing a rotational direction and simplifies duct piping.



#### [ Enhanced maintainability ]

Conventional compact sirocco fans were made with a casing divided into 2 parts. This required the removal of the suction and discharge ducts before being able to remove the impeller. However, by incorporating an easy-to-remove suction cone in the design, only the suction duct needs removal before the impeller can be taken off. Inner-casing inspection is also made easy.



#### [ Excellent corrosion resistance ]

Its casing and impeller have excellent chemical resistance thanks to our standardized FRPP injection mold construction that boasts high dimensional accuracy. Also, its effective ribbed and hemmed design gives it superior strength while keeping it lightweight. We used materials that not only offer great corrosion resistance and maintainability, but also 100% recyclability.

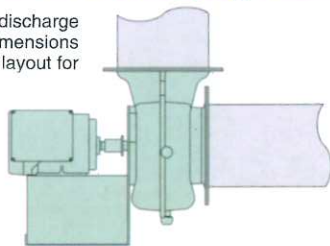


#### [ A variety of drive systems ]

Choose either a belt drive or direct action electric motor drive depending on the application. You can also choose from two types of direct action electric motor drives: a universal electric motor (D-type) or an electric motor with built-in inverter (V-type). Because the only rotating parts in direct action electric motor drives are the motor itself and the impeller, there is no V-belt, shaft or any other mechanical part. This significantly reduces maintenance requirements and labor costs incurred during equipment inspections. In addition, the electric motor with built-in inverter is direct action, however, like a belt driven fan, the required airflow and static pressure can be universally set.

#### [ Identical round flange for the suction and discharge ducts ]

To simplify duct piping, both the suction and discharge flanges were made circular with identical dimensions corresponding to existing regulations. Also, the layout for the CES type fans is close to an elbow piping arrangement.



インバーター搭載電動機 CES-V形



汎用電動機 CES-D形

#### CES形用途例

- 化学工場、薬品工場等の腐食性ガスの送風機として
- 多種類のガス体を取扱う化学実験室のドラフトチャンバー用送風機として
- バイオ研究施設、IC実験室の送風機として
- 厨房設備の送風機として
- 浄化槽設備の臭気用送風機として
- 海岸沿いの塩害にお困りの送風機として



## **WINFAN TECHNOLOGY co., LTD.**

TEL : 886-3-2120031

FAX : 886-3-2120032

http : //www.winfan.com.tw

E-mail : frpfan@seed.net.tw

Add : No.12,Lane 120,Sec.2,Chang-an Rd.,Luzhu  
Dist., Taoyuan City 338, Taiwan